



**Midwest Corn-Fed 100 Days • No Meat & Bone Meal Fed  
Humane Harvest Facility • Product of USA • No Continental  
No Brahman • No Dairy • High Quality British Genetics**

**DiCarlo**  
FOOD SERVICE

## Tenderloin & Filet

### Choice Beef PSMO Tenderloin

#135705 2/6.5 lb. fresh



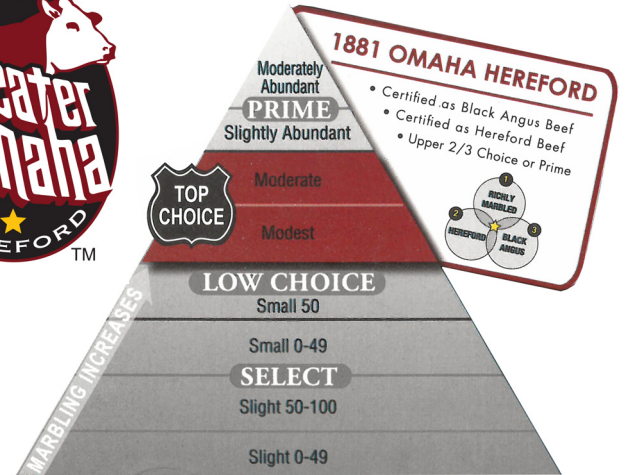
### Beef PSMO Tenderloin

#143499 12/6.5 lb. fresh

### Choice Beef Metro Cut Filet Mignon 2 pack

#135703 32/6 oz. frozen

#135756 24/8 oz. frozen



## Striploins

### Upper 2/3 Choice Angus

### 1881 Hereford Beef Striploin Center Cut

#135712 12/14 oz. fresh



### Upper 2/3 Choice Angus

### 1881 Hereford Beef Striploin 0x1

#140507 5/14 lb. avg. fresh



### What is 1881 Omaha Hereford™ Beef?

- The top 2% from Greater Omaha Beef
- USDA Quality: Top Choice
- Hereford & Angus Black Baldy Beef
- Medium to fine marbling texture
- Exceptional quality and consistency
- A prime dining experience

## Ribeyes

### Choice Beef Ribeye Lipon Boneless 112A

#143498 5/15 lb. fresh



### Choice Beef Ribeye Long Bone Frenched

#135722 14/32 oz. fresh \*S/O

## Teres Major

### Select Chuck Teres Major Shoulder

#141831 6/8 lb. fresh



## Culotte

### Top Butt Culotte Steak Bnls

#141588 32/6 oz. fresh



## Tripe

### Beef Tripe Honeycomb

#141931 1/15 lb. frozen \*S/O



## Rounds & Brisket

### **Select Beef Bottom Round Flat**

#143487 4/16 lb. fresh



### **Choice Beef Top Round Inside**

#143565 3/20 lb. avg. fresh

### **Choice Beef Eye Round Boneless**

#143545 12/6 lb. avg. fresh



### **Choice Beef Brisket**

#143689 5/15 lb. avg. fresh

## Flank, Short Rib & Skirt

### **Choice Beef Flank Steak**

#145206 6/13 lb. avg. fresh



### **Beef Chuck Flap Meat Short Rib Boneless**

#140508 12/2 pc. fresh

### **Choice Beef Short Rib Boneless**

#140549 12/2 pc. fresh

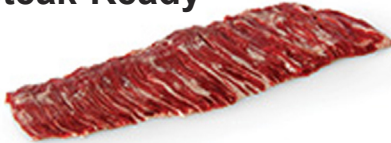


### **Outside Skirt Peeled Cleaned Steak-Ready**

#141201 6/2 pc. fresh

### **Outside Skirt Steak Unpeeled**

#141830 16/4 lb. avg. fresh



### **Beef Aitch Steak Mini Skirt**

6 oz. #141205 12/4 pc. fresh



### **Beef Chuck Roll CAB Neck Bnls**

#130029 3/25 lb. avg. fresh

### **Hereford Beef Hanging Tender Bnls**

#140366 1/37 lb. avg. fresh



## Ground Beef

### **Ground Beef 81/19 Fine Grind**

#140310 8/10 lb. fresh

#135045 8/10 lb. frozen



### **Ground Angus Beef 80/20**

#140312 6/10 lb. fresh

#140313 6/10 lb. frozen



## Burgers

### **Fresh Angus Beef Rib Brisket Chuck Blend Burger**

#141353 30/6 oz. fresh, #141356 frozen

#141355 24/8 oz. fresh, #141354 frozen





**DiCarlo** FOOD SERVICE

P.O. BOX 2365 • 1630 N. OCEAN AVENUE • HOLTSVILLE • NY 11742  
 631-758-6000 • FOR SALES 1-800-DICARLO • dicarlofood.com

DEPOT CENTERS:  
 BELLMAWR, NJ NEWARK, NJ MILLBURY, MA



A UniPro Solutions Company



@dicarlofood

**DiCarlo Distributors is not responsible for any typographical errors.**